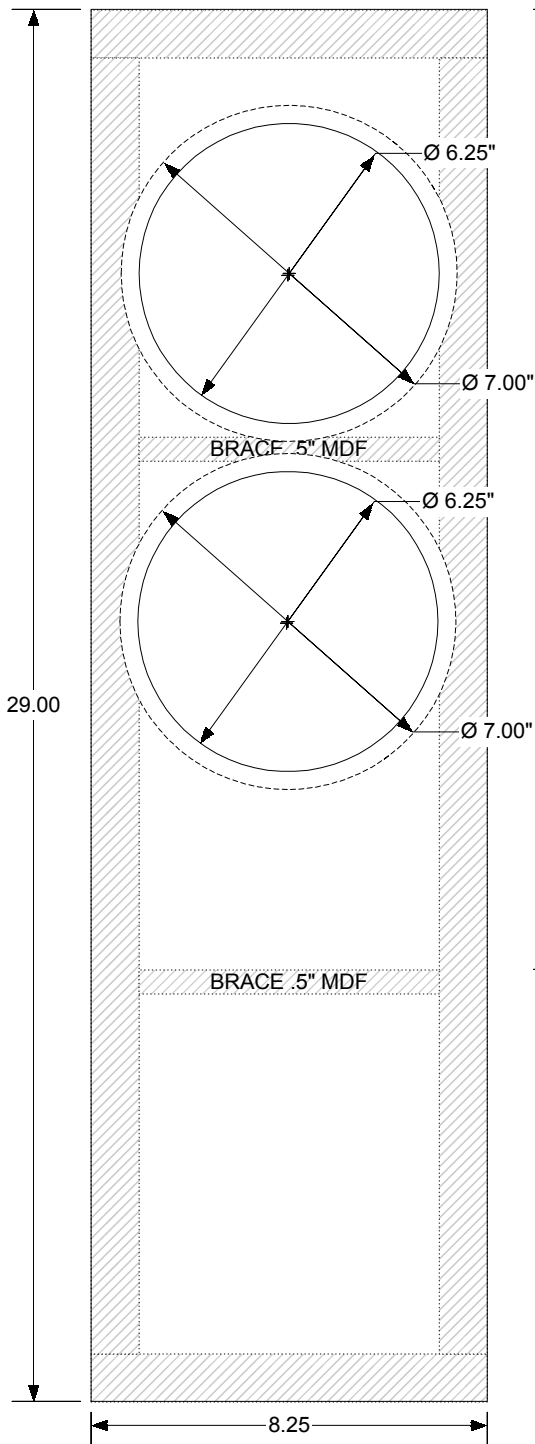


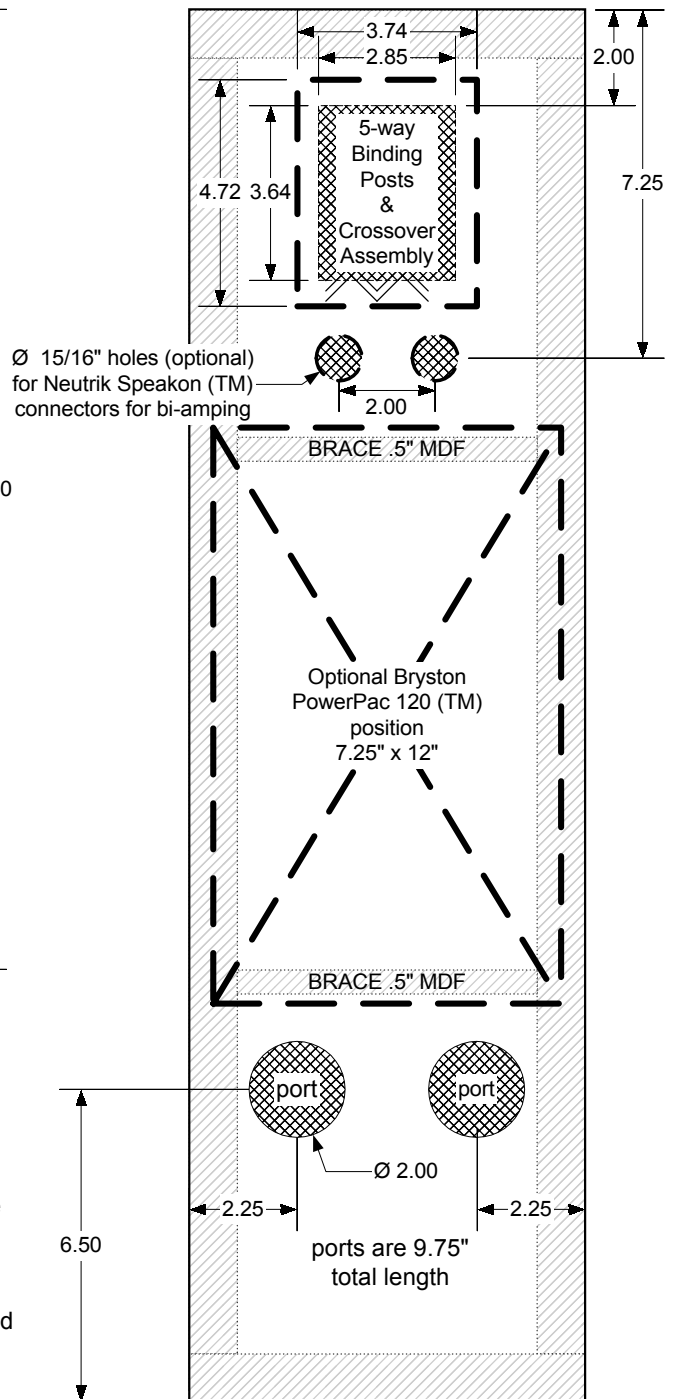
Newform Research Inc.

R6 Two Hole Ported Enclosure for R645 Loudspeaker System

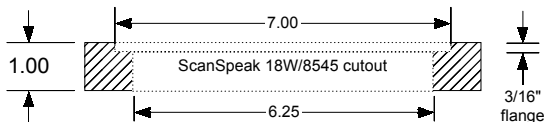
front baffle



rear baffle



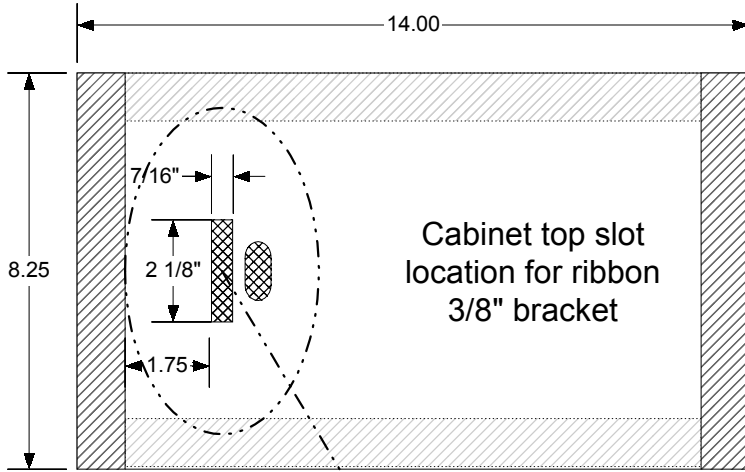
All dimensions are inches
Material is MDF 1" except where noted



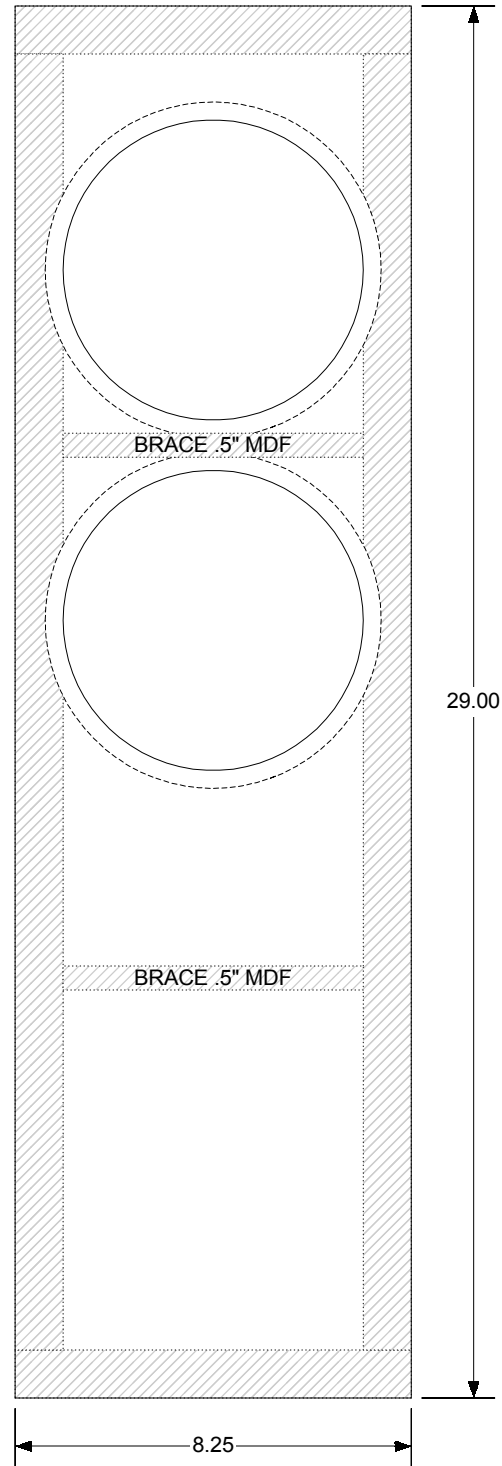
see layout and cutting diagram on last page

Newform Research Inc.

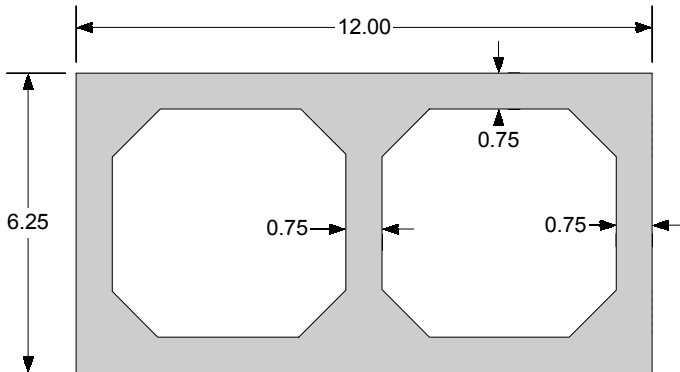
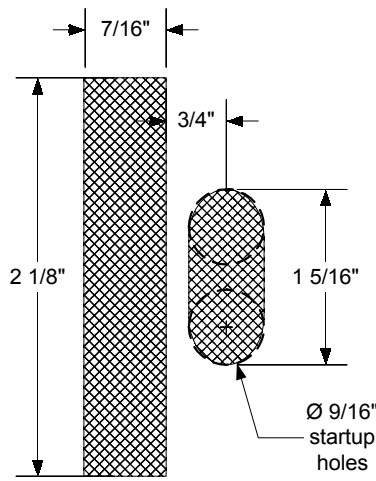
R6 Two Hole Ported Enclosure for R645 Loudspeaker System



front view



All dimensions are inches
Material is MDF 1" except where noted

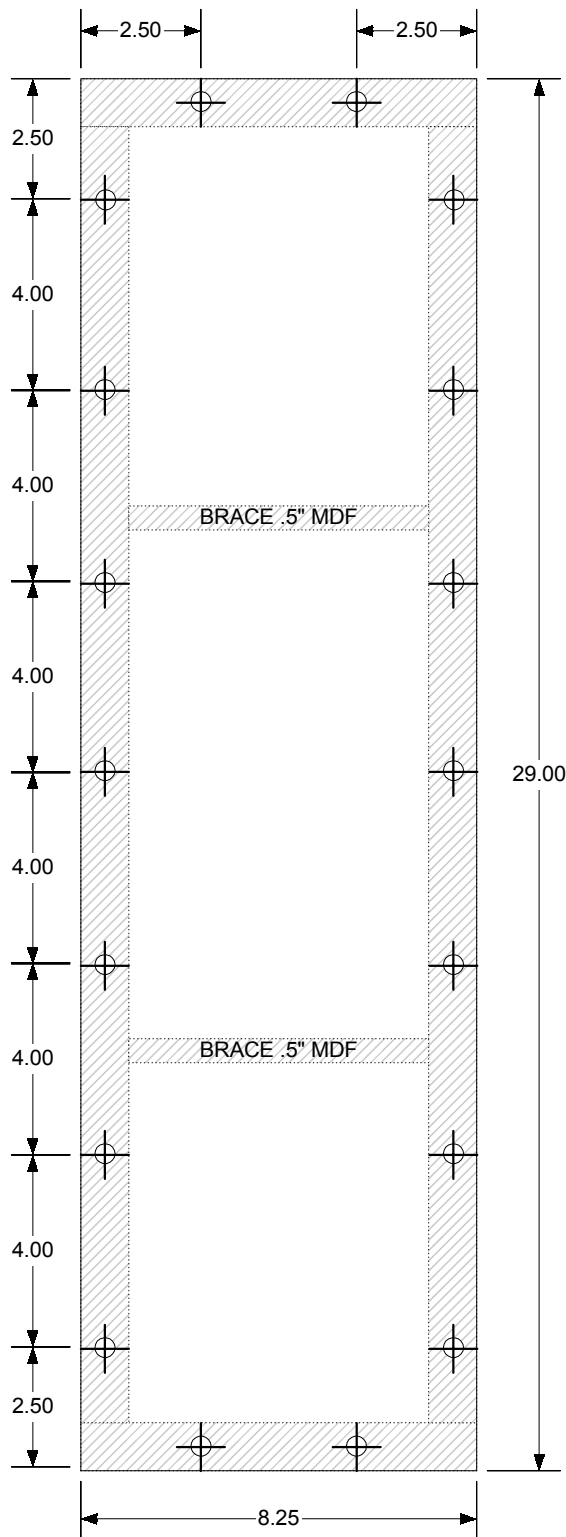


brace (2x) 1/2" MDF - 3/4" border

see layout and cutting diagram on last page

Newform Research Inc.

R6 Two Hole Ported Enclosure for R645 Loudspeaker System



Rear baffle

Important note:

this information is necessary only if you want to have a removable rear panel. If not required just (screw and) glue the rear panel to the rest of the enclosure.

Parts (not included in R645 kit):

18 pieces of each (per enclosure):

Hex socket cap screw 1/4"-20 x 1.5"

T-nut 1/4"-20

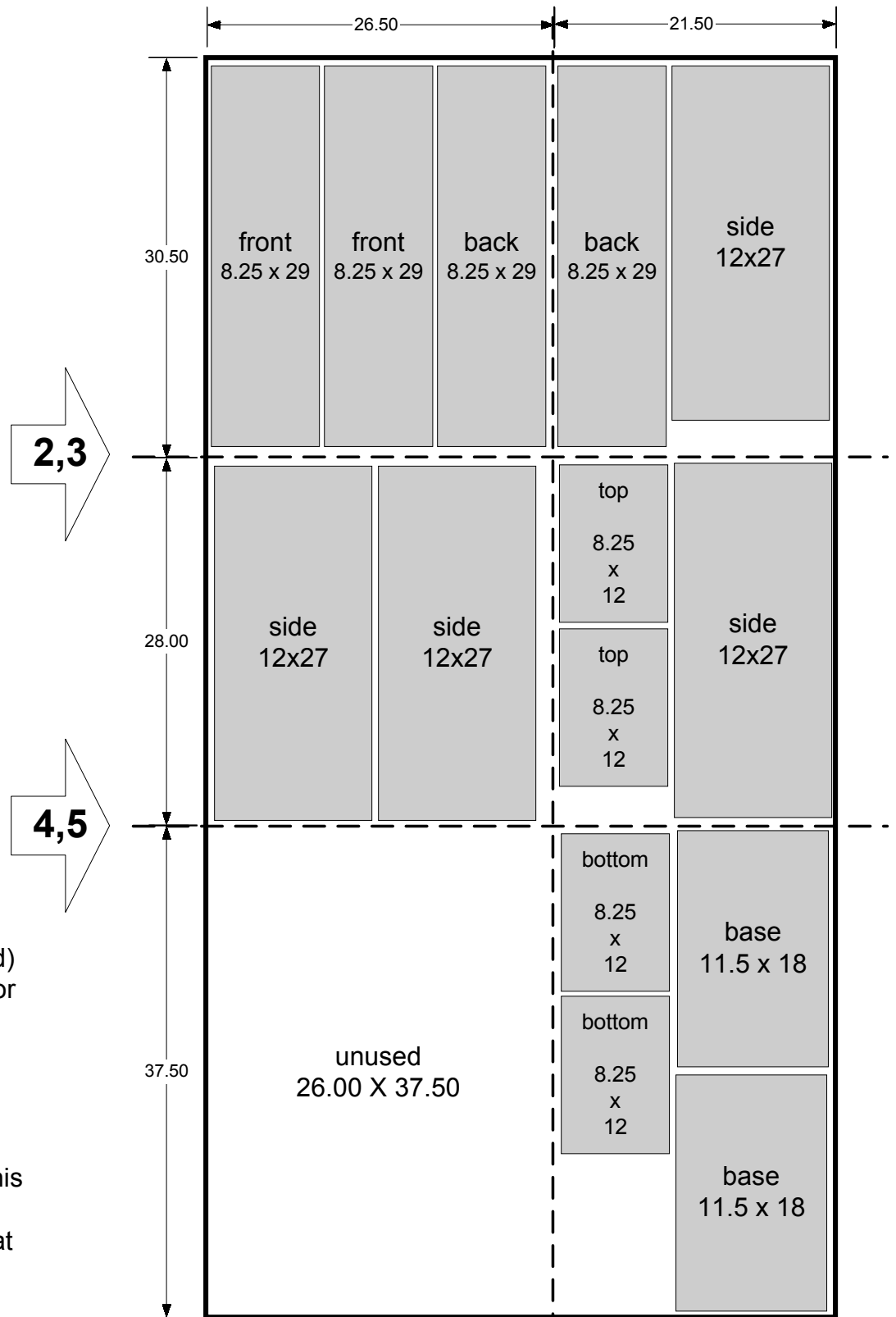
Washer 1/4" hole, 1/2" diam.

If possible use metal washers with a neoprene ring or ordinary washers with some silicone for a better seal (see note below).

You can countersink head and washer in rear baffle for a nicer look.

Important: Make sure that all edges are airtight. For removable panels you can use weatherstrips or removable silicone (used for winterizing windows). For the rest of the enclosure use regular silicone or similar adhesive. Just apply all around and let it dry (a day or two) before closing the enclosure. Remember that vapors from these adhesives can adversely affect some driver parts. Leave plenty of time to dry before installing the drivers or finishing the enclosure.

Newform Research Inc. Layout Plan for Two R645 Enclosures



Notes:

Material is 1" MDF
(Medium Density Fiberboard)
One 4'x8' sheet is enough for
two R645 enclosures.

The four internal braces are
made of 1/2" MDF.

MDF is VERY heavy. For this
reason you should have the
major cuts (1 thru 5) made at
the lumber yard.

For more information about
this material (blades to use,
etc.) see the MDF FAQ:

<http://www.lungster.com//speakers/mdffaq/mdf.html>

